



SUMMIT K12 IS BUILT SPECIFICALLY FOR THE CA ELD STANDARDS

ENGLISH LANGUAGE DEVELOPMENT



ACCELERATE LANGUAGE PROFICIENCY GROWTH



STUDENTS WILL PROGRESS AT LEAST ONE PROFICIENCY LEVEL!*

**For full details visit summitk12.com/guarantee-information*

Scan the code to learn more!



- Year-round, high-quality language development instruction and practice to optimize ELPAC outcomes
- Adaptive Personalized Learning Plans (PLPs)
- Three ELD progress monitoring benchmarks
- Content differentiated for each of the seven ELPAC grade level bands
- Increase composite score by at least one level per year
- Scaffolded and Linguistically Accommodated Instruction
- AI auto scored Speaking Items with model exemplar recordings
- Accelerate reclassifications of long-term LTELs
- Formative and Progress Monitoring Assessments with real-time, data-rich reports



SUMMIT K12



CONNECT TO LITERACY — CA ELPAC EDITION

Summit K12 provides teachers with the support and tools they need to ensure their K–12 Emergent Bilingual scholars are making steady progress toward their English Language Proficiency Growth Goals throughout the year.

EASY • EFFICIENT • EFFECTIVE

	ORAL LANGUAGE MODULE	WRITTEN LANGUAGE MODULE	LANGUAGE FOUNDATION SKILLS
ADAPTIVE PERSONALIZED LEARNING PLANS (PLPs)	✓	✓	✓
COMPREHENSIVE PROGRESS MONITORING & REPORTS	✓	✓	✓
LESSON MODEL VIDEOS & GUIDED PRACTICE	✓	✓	✓
SCAFFOLDED & LINGUISTICALLY ACCOMMODATED INSTRUCTION	✓	✓	✓
PROFESSIONAL DEVELOPMENT & TRAINING COURSES	✓	✓	✓
PRONUNCIATION PERFECTOR™ AI	✓		✓
AI AUTO-SCORING OF THE SPEAKING ITEMS	✓		
ELPAC WRITING RUBRICS		✓	
“VIRTUAL TEACHER” TARGETED COACHING TIPS		✓	
VIRTUAL MIRROR			✓
ACADEMIC VOCABULARY MASTERY			✓

SCAFFOLDED & LINGUISTICALLY ACCOMMODATED INSTRUCTION

Writing Skills Lesson Name	Learn	Practice	Assess
Standard Grammar and Usage			78%
Complete Complex Sentences with Subject-Verb Agreement	✓	88%	100%
Avoidance of splices, run-ons, and fragments	✓	100%	63%
 Complete Sentences with Subject Verb-Agreement	✓	100%	50%
 Compound Sentences with Subject Verb Agreement	✓	100%	100%
Verbs			98%
Consistent, appropriate use of Verb Tenses and Active and Passive Voice	✓	83%	100%
Consistent, appropriate uses of Verb Tenses	✓	100%	100%

COMPREHENSIVE PROGRESS MONITORING & REPORTS

Student	Pre-test	Interim	Summative Test	Level
Alonso, Maria	1.48	2.33	2.49	Level 2H
Avina, Denisse	2.33	2.67	2.89	Level 3L
Cartier, Edna	1.42	2.47	2.73	Level 3L
Cortez, Emily	1.35	2.59	3.01	Level 3H
Duran, Ricardo	1.22	3	3.55	Level 4
Fritierrez, Debbie	1.39	2.2	2.38	Level 2H
Gretsky, John	2.05	2.94	3.62	Level 4
Hernandez, Beth	1.39	3.26	3.52	Level 4

Transparency, execution, implementation, and acceleration to reach California's 2030 outcomes:

- Reduce the percentage of ELs in grades 6-12 who are LTELs in half
- Ensure that half of reclassified fluent English proficient students (RFEPs) earn the state seal of biliteracy
- Reduce the number of students at risk of becoming LTELs in half
- Ensure ongoing RFEP achievement that is on par with Fluent English proficient students

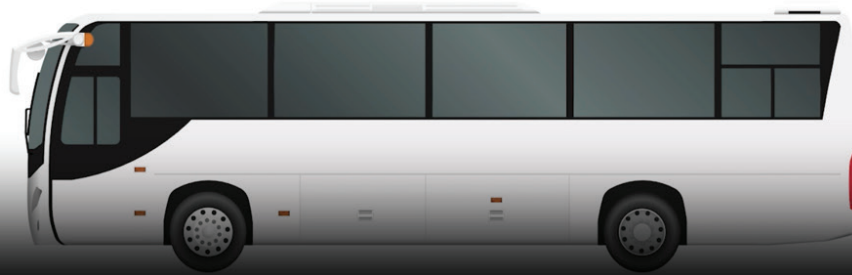
VIDEO LESSONS



Subordinating Conjunctions

A subordinating conjunction joins the two parts of a complex sentence: the independent clause and the dependent clause.

A	WH	I	T	E	B	U	S
although as after	when whereas whenever wherever where while	if if only in order that	though	even if even though	before because	until unless	so that since



1:22 / 6:25



GUIDED PRACTICE

Drag the words into the correct boxes

I like milk sugar in my tea.

I want to go outside, it's too hot.

I asked her to leave, I was very tired.

He doesn't eat cake, does he eat chocolate.

Do you want to play chess checkers?

We were very hungry, we ate a whole pizza.

My dad doesn't like to run, he still goes jogging.

so

or

yet

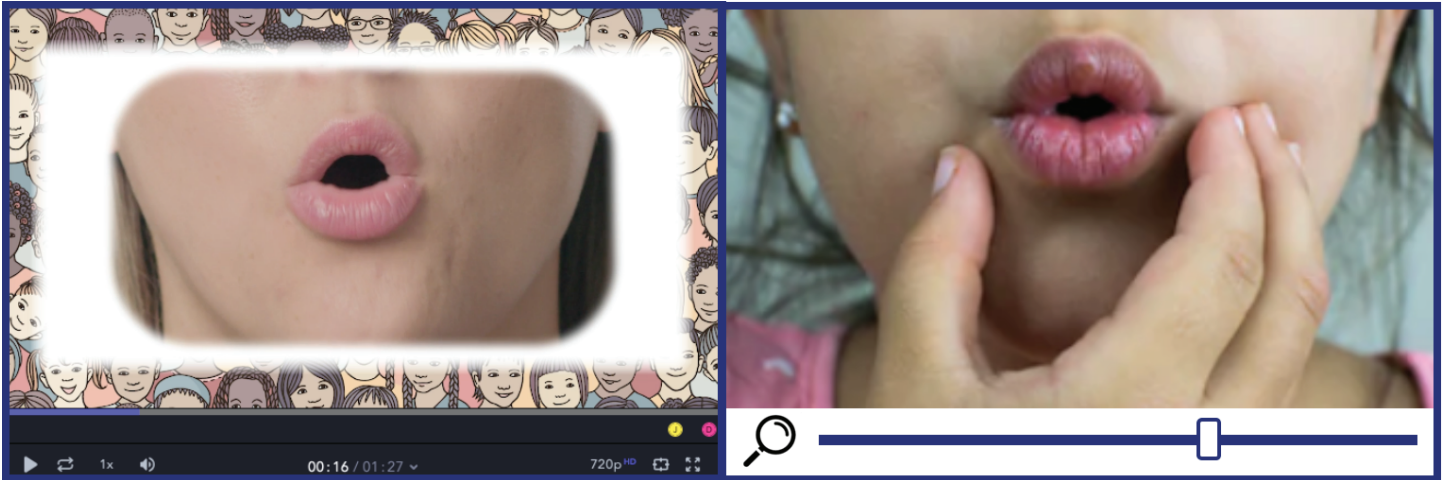
for

and

nor

but

VIRTUAL MIRROR



Students watch the video clip making the sound...

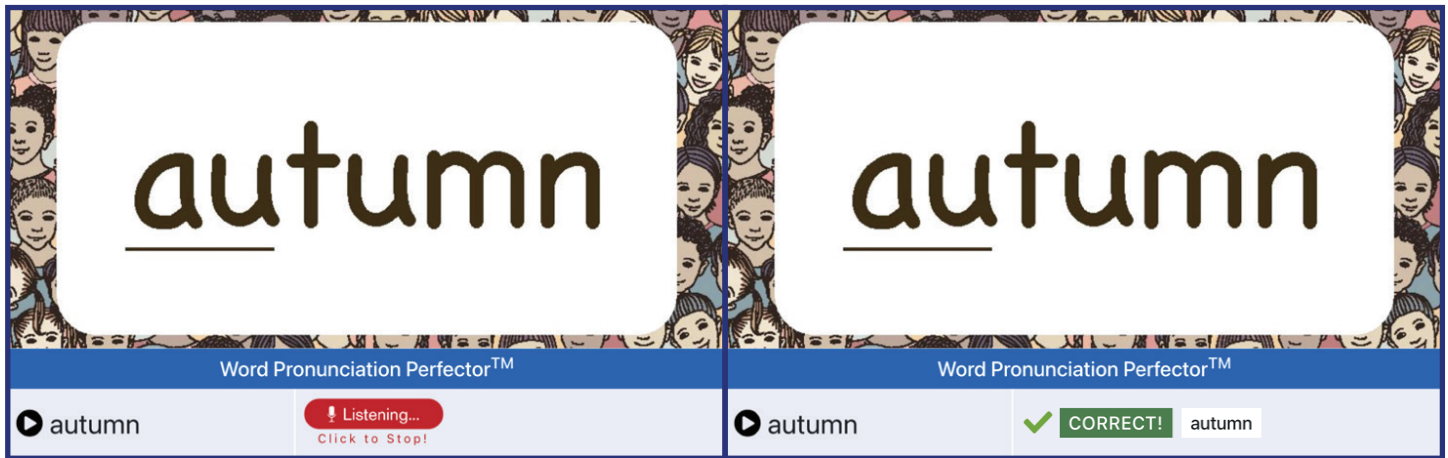
...then adjust their camera zoom to practice themselves.

“VIRTUAL TEACHER” TARGETED COACHING TIPS

Student receives two comments automatically chosen to reflect the score given for that specific rubric.

Speaking Proficiency Descriptor – TYPE 6: Summarize an Academic Presentation- [0-4 Point Rubric]		Score	Select
<ul style="list-style-type: none"> A full response includes a clear summary of the main points and details of the presentation. Ideas are cohesive and connected. Grammar and word choice are varied and effective; errors do not impede meaning. 	<ul style="list-style-type: none"> Pronunciation or intonation do not impede meaning. Speech is usually smooth and sustained. 	4	<input type="radio"/>
<ul style="list-style-type: none"> Response includes a mostly clear summary of some of the main points of the presentation with partial/basic details. Ideas are usually cohesive and connected. Grammar and word choice are adequate; errors occasionally impede meaning. 	<ul style="list-style-type: none"> Pronunciation or intonation occasionally impede meaning Speech is fairly sustained, though some choppiness or halting may occur. 	3	<input type="radio"/>
<ul style="list-style-type: none"> Response includes a partial summary of at least one of the main points of the presentation and may lack an understanding of the main points. Ideas are sometimes cohesive and connected. Grammar and word choice are simple and repetitive; errors often impede meaning. 	<ul style="list-style-type: none"> Pronunciation or intonation often impede meaning. Speech may be slow, choppy, or halting. 	2	<input type="radio"/>
<ul style="list-style-type: none"> Response includes an attempt to reference the presentation/picture but conveys little relevant information Ideas are rarely cohesive and connected. Grammar and word choice are limited and impede meaning. 	<ul style="list-style-type: none"> Pronunciation or intonation often impede meaning. Speech may consist of isolated word(s) or phrase(s) related to the picture. 	1	<input type="radio"/>
<ul style="list-style-type: none"> Response is not relevant. Response contains no English. No response, “I don’t know,” or is completely unintelligible. 		0	<input type="radio"/>

PRONUNCIATION PERFECTOR™ AI



Students practice saying words into the microphone...

...then the algorithm analyzes their pronunciation.

AI AUTO-SCORING OF THE SPEAKING ITEMS

- Dynamically evaluates 112 Linguistic dimensions tied to the CA ELPAC Speaking Rubrics
- Artificial Intelligence (AI) used to rate student recordings
- Includes 25+ targeted virtual coaching tips

CA ELPAC Speaking Rubric Version	ID#	K	1 st	2 nd	3 rd _5 th	6 th _8 th	9 th _10 th	11 th _12 th
Type 1: Talk About a Scene [Rubric Points 0-1]	t1_1	X	X	X	X	X	X	X
Type 1: Talk About a Scene [Rubric Points: 0-2]	t1_2	X	X	X	X	X	X	X
Type 2: Speech Functions [Rubric Points: 0-2]	t2			X	X	X	X	X
Type 3: Support an Opinion [Rubric Points: 0-2]	t3_2	X	X	X				
Type 3: Support an Opinion [Rubric Points: 0-3]	t3_3				X	X	X	X
Type 4: Retell a Narrative [Rubric Points: 0-4]	t4	X	X	X	X			
Type 5: Present and Discuss Information [Rubric Points: 0-3]	t5					X	X	X
Type 6: Summarize and Academic Presentation [Rubric Points: 0-4]	t6	X	X	X	X	X	X	X

CONNECT TO LITERACY™

Listening-Speaking

PROGRESS MONITORING PLPs

THE BASICS

PRESENT TENSE

PAST-FUTURE TENSE

DIFFERENTIATED PRACTICE

ELPAC READINESS

LISTENING

SPEAKING

CONNECT TO LITERACY™

Reading-Writing

PROGRESS MONITORING PLPs

READING

READING SKILLS PRACTICE

WRITING

CA-CCSS LANGUAGE SKILLS

ELPAC WRITING PRACTICE & MASTERY

Language

CONNECT TO LITERACY™

Foundation Skills

ABSTRACT NOUNS

ACADEMIC WORDS

ANTONYMS

COGNATES

CONNECTING WORDS

DISTINCT SOUNDS OF ENGLISH

HIGH FREQUENCY WORDS

HOMOPHONES & HOMOGRAPHES

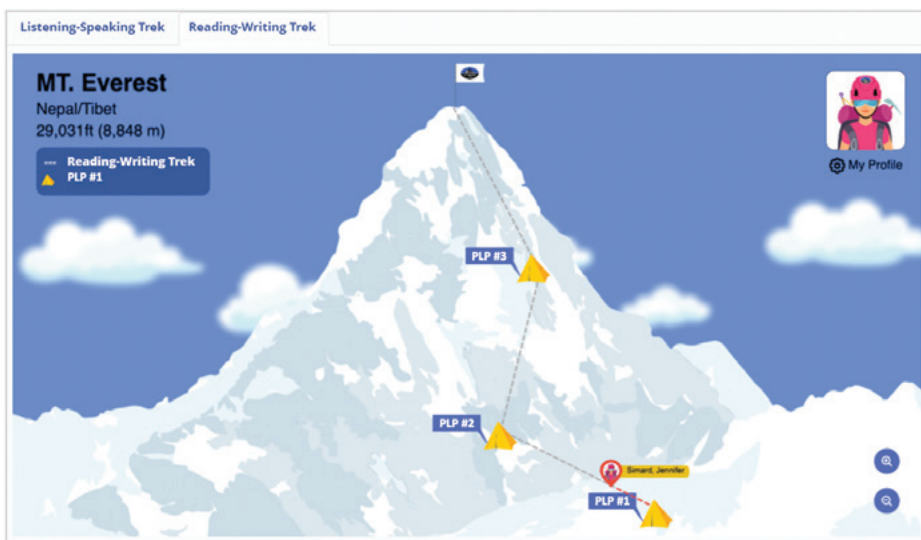
IDIOM-EXPRESSIONS

INSTRUCTIONAL WORDS

PHONEMIC FUNDAMENTALS

SYNONYMS

**STUDENTS MONITOR THEIR PLP
PROGRESS PROMOTING SELF-EFFICACY**





ADAPTIVE PERSONALIZED LEARNING PLANS (PLPs)

Progress Monitoring Assessments	Assess	PLP Award
ELPAC Reading Pre-test - Creates PLP #1	1.74	
ELPAC Writing Pre-test - Creates PLP #1	1.25	
ELPAC Reading Interim - Creates PLP #2	2.9	
ELPAC Writing Interim - Creates PLP #2	2.2	
ELPAC Reading Summative - Creates PLP #3	3.65	
ELPAC Writing Summative - Creates PLP #3	2.8	

PLP #1

PLP #2

PLP #3

ELPAC Reading				
READING SKILLS PRACTICE	Quiz 1	Quiz 2	Quiz 3	Quiz 4
TYPE 8 READ A LITERARY PASSAGE	1.45	1.74	2.25	2.85
TYPE 4 DESCRIBE A PICTURE	1.56	1.85	2.4	2.55
TYPE 2 READ-ALONG STORY WITH SCAFFOLDING	2.9	3.7	3.55	3.8
ELPAC Writing				
ELPAC WRITING SKILLS PRACTICE	Quiz 1	Quiz 2	Quiz 3	Quiz 4
TYPE 4 DESCRIBE A PICTURE	1.56	1.85	2.4	2.55
TYPE 5 WRITE ABOUT AN EXPERIENCE	1.54	1.65	2.55	2.8
TYPE 6 WRITE ABOUT ACADEMIC INFORMATION	Start	Start	Start	Start
CA-CCSS Language Skills				
Language Skills Lesson	Learn	Practice	Assess	Edit

Example shown is from the Reading-Writing Mode